

ATP13A3 Antibody (N-term)
Affinity Purified Rabbit Polyclonal Antibody (Pab)
Catalog # AP5938a**Specification**

ATP13A3 Antibody (N-term) - Product Information

Application	FC, WB, IHC-P,E
Primary Accession	Q9H7F0
Other Accession	NP_078800.3
Reactivity	Human
Host	Rabbit
Clonality	Polyclonal
Isotype	Rabbit IgG
Calculated MW	138043
Antigen Region	101-129

ATP13A3 Antibody (N-term) - Additional Information**Gene ID** 79572**Other Names**

Probable cation-transporting ATPase 13A3, 363-, ATPase family homolog up-regulated in senescence cells 1, ATP13A3, AFURS1

Target/Specificity

This ATP13A3 antibody is generated from rabbits immunized with a KLH conjugated synthetic peptide between 101-129 amino acids from the N-terminal region of human ATP13A3.

Dilution

FC~~1:10~50

WB~~1:1000

IHC-P~~1:50~100

E~~Use at an assay dependent concentration.

Format

Purified polyclonal antibody supplied in PBS with 0.09% (W/V) sodium azide. This antibody is purified through a protein A column, followed by peptide affinity purification.

Storage

Maintain refrigerated at 2-8°C for up to 2 weeks. For long term storage store at -20°C in small aliquots to prevent freeze-thaw cycles.

Precautions

ATP13A3 Antibody (N-term) is for research use only and not for use in diagnostic or therapeutic procedures.

ATP13A3 Antibody (N-term) - Protein Information

Name ATP13A3 {ECO:0000303|PubMed:33310703, ECO:0000312|HGNC:HGNC:24113}

Function ATP-driven pump involved in endocytosis-dependent polyamine transport. Uses ATP as an energy source to transfer polyamine precursor putrescine from the endosomal compartment to the cytosol.

Cellular Location

Recycling endosome membrane; Multi-pass membrane protein. Early endosome membrane; Multi-pass membrane protein. Late endosome membrane; Multi-pass membrane protein.
Note=Mainly targeted to the recycling endosomes and to a lesser extent to the early and late endosomes

Tissue Location

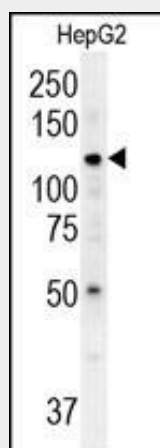
Broadly expressed..

ATP13A3 Antibody (N-term) - Protocols

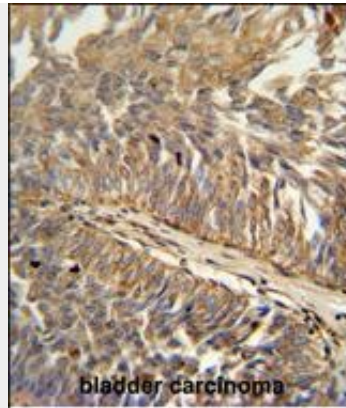
Provided below are standard protocols that you may find useful for product applications.

- [Western Blot](#)
- [Blocking Peptides](#)
- [Dot Blot](#)
- [Immunohistochemistry](#)
- [Immunofluorescence](#)
- [Immunoprecipitation](#)
- [Flow Cytometry](#)
- [Cell Culture](#)

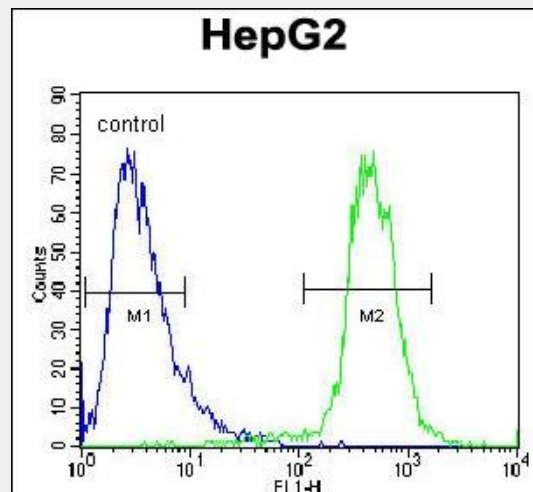
ATP13A3 Antibody (N-term) - Images



ATP13A3 Antibody (N-term) (Cat. #AP5938a) western blot analysis in HepG2 cell line lysates (35ug/lane). This demonstrates the ATP13A3 antibody detected the ATP13A3 protein (arrow).



ATP13A3 antibody (N-term) (Cat. #AP5938a) immunohistochemistry analysis in formalin fixed and paraffin embedded human bladder carcinoma followed by peroxidase conjugation of the secondary antibody and DAB staining. This data demonstrates the use of the ATP13A3 antibody (N-term) for immunohistochemistry. Clinical relevance has not been evaluated.



ATP13A3 Antibody (N-term) (Cat. #AP5938a) flow cytometric analysis of HepG2 cells (right histogram) compared to a negative control cell (left histogram). FITC-conjugated goat-anti-rabbit secondary antibodies were used for the analysis.

ATP13A3 Antibody (N-term) - Citations

- [ATP13A3 and caveolin-1 as potential biomarkers for difluoromethylornithine-based therapies in pancreatic cancers.](#)